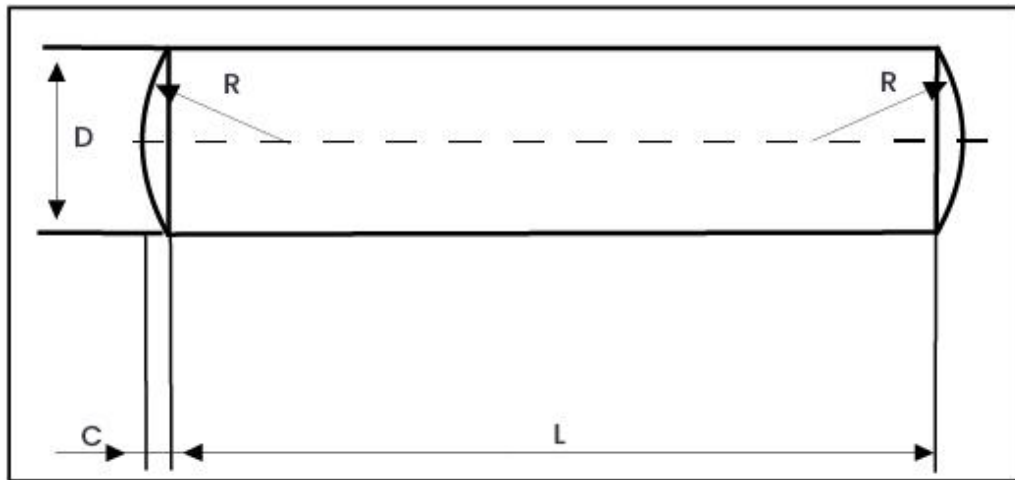


**DIN 7**  
**Parallel Dowel Pin**



*Weight Chart – DIN 7 Parallel Dowel Pin*

Weight in Kg/1000 pieces

Table 1: Weight Chart – M1 to M4

<b>L</b>	<b>M1</b>	<b>M1.20</b>	<b>M1.50</b>	<b>M2</b>	<b>M2.50</b>	<b>M3</b>	<b>M4</b>
<b>3</b>	0.018	0.027	0.044				
<b>4</b>	0.025	0.036	0.058	0.105	0.165	0.245	
<b>5</b>	0.032	0.045	0.072	0.13	0.204	0.30	0.341
<b>6</b>	0.038	0.054	0.085	0.155	0.243	0.355	0.64
<b>8</b>	0.048	0.072	0.113	0.203	0.32	0.466	0.84
<b>10</b>	0.062	0.09	0.141	0.253	0.397	0.577	1.04
<b>12</b>	0.074	0.107	0.168	0.302	0.474	0.688	1.23
<b>14</b>		0.125	0.195	0.351	0.55	0.799	1.44
<b>16</b>			0.224	0.401	0.627	0.91	1.63
<b>18</b>				0.451	0.705	1.02	1.83
<b>20</b>				0.50	0.782	1.13	2.03
<b>24</b>					0.937	1.35	2.43
<b>28</b>						1.57	2.82
<b>32</b>						1.79	3.21
<b>36</b>							3.60
<b>40</b>							4

Table 2: Weight Chart – M5 to M20

<b>L</b>	<b>M5</b>	<b>M6</b>	<b>M8</b>	<b>M10</b>	<b>M12</b>	<b>M16</b>	<b>M20</b>
<b>5</b>	0.879						
<b>6</b>	1.02	1.53					
<b>8</b>	1.33	1.97	3.58				
<b>10</b>	1.64	2.41	4.37	7.01	10.20		
<b>12</b>	1.95	2.85	5.16	8.24	12		
<b>14</b>	2.26	3.29	5.95	9.47	13.80		
<b>16</b>	2.57	3.73	6.74	10.70	15.60	28.30	
<b>18</b>	2.88	4.17	7.53	11.90	17.40	31.50	
<b>20</b>	3.19	4.61	8.31	13.20	19.20	34.70	56.40
<b>24</b>	3.80	5.50	9.89	15.60	22.80	41.10	66.20
<b>28</b>	4.42	6.40	11.50	18	26.40	47.50	76
<b>32</b>	5.03	7.30	13	20.60	30	53.90	85.80
<b>36</b>	5.65	8.19	14.60	23.10	33.60	60.30	95.60
<b>40</b>	6.27	9.08	16.20	25.50	37.20	66.60	105
<b>45</b>	7.03	10.20	18.10	28.60	41.70	74.50	118
<b>50</b>	7.80	11.30	20.10	31.70	46.20	82.50	130
<b>55</b>		12.40	22.10	34.80	50.70	90.40	142
<b>60</b>		13.50	24	37.90	55.20	98.40	155
<b>70</b>			28	44.10	64.10	114	179
<b>80</b>			32	50.30	73	130	204
<b>90</b>				56.50	82.10	146	228
<b>100</b>				62.70	91	161	253
<b>120</b>					109	192	302
<b>140</b>						224	351